



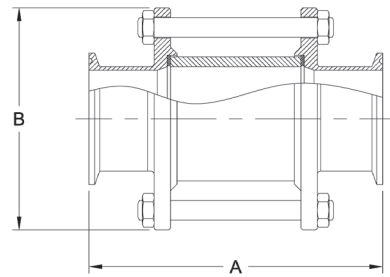
Premium Manufacturer of Sanitary Fittings, Valves, Pumps, & More

BOLT STYLE SIGHT GLASS

Steel & O'Brien is pleased to announce an economical bolt style sight glass. This in-line sight glass is comprised of a stainless steel frame and glass. Observe the flow of product clearly and precisely through your process lines. Made with borosilicate glass and sealed with FKM gaskets and clamp end connections.

FEATURES AND SPECIFICATIONS

- 316L SS end connection material
- Finish ID/OD is 32Ra per 3A requirements
- Borosilicate glass viewport
- FDA FKM gasket material
- 304 SS hardware material
- Maximum temperature 250° F (121° C)
- 3A Certified



PART NUMBER	SIZE	A	B	* NON-SHOCK WORKING PRESSURE @68° F (20° C)
54BMPS-1.00-VP-316L	1"	5.875	2.28	145 PSI (10 BAR)
54BMPS-1.50-VP-316L	1-1/2"	5.875	2.91	145 PSI (10 BAR)
54BMPS-2.00-VP-316L	2"	5.875	3.31	145 PSI (10 BAR)
54BMPS-2.50-VP-316L	2-1/2"	6.375	3.94	120 PSI (8.28 BAR)
54BMPS-3.00-VP-316L	3"	7.500	4.33	120 PSI (8.28 BAR)
54BMPS-4.00-VP-316L	4"	7.625	5.51	95 PSI (6.55 BAR)
54BMPS-6.00-VP-316L	6"	7.625	8.78	80 PSI (3.15 BAR)

REPLACEMENT PARTS

GLASS	FKM END SEALS
54BMPS-1.00-BG	54BMPS-1.00-VSEAL
54BMPS-1.50-BG	54BMPS-1.50-VSEAL
54BMPS-2.00-BG	54BMPS-2.00-VSEAL
54BMPS-2.50-BG	54BMPS-2.50-VSEAL
54BMPS-3.00-BG	54BMPS-3.00-VSEAL
54BMPS-4.00-BG	54BMPS-4.00-VSEAL
54BMPS-6.00-BG	54BMPS-6.00-VSEAL

* Non-Shock hydraulic ratings are the maximum pressures the sight glass assembly can withstand at ambient temperature. Pressure ratings in the chart above assume absence of thermal shock, allowances for system expansion, along with the proper installation of clamp joints.

Simplifying Sanitary Through Superior Service™

7869 Route 98, Arcade, New York 14009
 Tel: (585) 492-5800
 sales@steelobrien.com

© Steel & O'Brien Mfg. Inc.
 Form No.014 09/23

